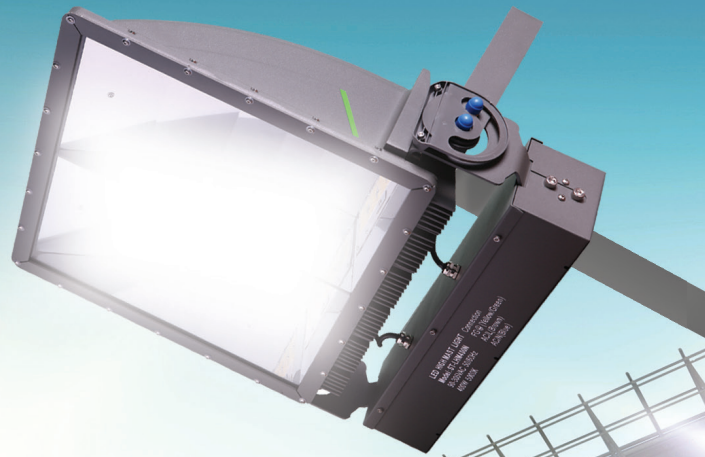


STEALTH FLOOD

External Lighting



Product Overview

Stealth flood with sturdy design & unique light distribution delivers both quality lighting with energy efficiency & longevity.

- Light output : Up to 104,000Lm
- Efficacy : 130 Lm/W
- IP66 Rating
- Thermal rating: 50 °C
- Integral LED driver
- Built in 20kV Surge protection
- Daylight sensor (optional)



Product Applications

- General flood light applications
- Various sport fields
- Stadiums
- Sea port
- Rail yard
- Airport
- Car parks
- Ferries
- Various public and commercial spaces
- And many more external lighting application.

- Stealth flood with unrivaled asymmetric light distribution system
- High pressure cast Aluminium housing: Gray finish
- Standard warranty: 5 years *
- Ease of installation & maintenance free.
- Sturdy design to survive in adverse conditions



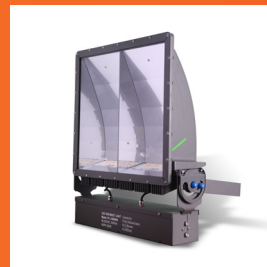


Main Features

Product Name:	Stealth Flood
AC Input::	100-277 V AC , 50/60Hz
CRI Range:	CRI>70 (CRI 80 -Optional)
CCT Range:	3000K, 4000K or 5000K
Luminous flux:	39,000Lm (300W) 52,000Lm (400W) 65,000Lm (500W) 78,000Lm (600W) 104,000Lm (800W)
Power options:	100W to 800W
Light distribution:	Indirect asymmetric
Control system:	1-10v dimming (optional)
Accessories:	IP66 Junction box, Asymmetrical louvre, cable connector, protective metal wire guard etc.

Stealth Flood Options

Stealth flood is a one to one replacement for existing HID flood light with up to 65 % energy savings.



Contact Us

LTC Head Office:

Sales: 1300 832 372

Email: sales@lighttc.com.au

Admin: 1300 832 372

Email: admin@lighttc.com.au

Jason McCoy

Mobile. 0439 039 142

Email. JasonM@lighttc.com.au



Address:

2 Norfolk Road,
Greenacre, NSW. 2190. Australia.

Website: www.lighttc.com.au